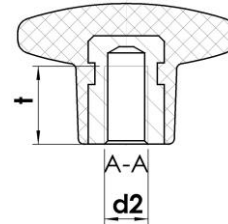
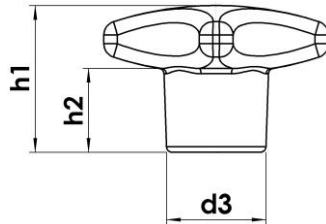
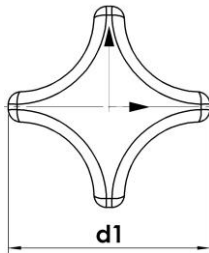


Palm Grip DIN 6335

thermosetting plastic, glossy
Form K with bush made of electro zinc-plated steel or brass



d ₁	d ₂	d ₃ ~	h ₁ ~	h ₂ ~	t min.
20	M4	10	13	6	6,5
25	M5	12	16	8	9,5
32	M6	14	20	10	12
40	M8	18	25	13	14
50	M10	22	32	20	18
63	M12	26	40	25	22
80	M16	35	50	30	30
100	M20	34	65	38	30

Execution:

Plastic:

- Thermoset, PF 31, highly polished, black

Bush:

- Electro zinc-plated steel
- Brass (non-standard)
Version K 20 x M4 with brass bush only

Remarks:

- The size 100 mm is not specified in the DIN standard.
- Other versions (specifically with special reinforcing parts according to customer specifications) and colours on request.
- Technical information see page 44 ff.

our article code:

The article description consists of

- the standard „DIN 6335“
- the form identifying letter „K“
- the head diameter d₁
- the thread size d₂
- the suffix “Ms”, if a brass bush is required

Order example:

Palm grip DIN 6335 - K 25 x M5

Palm grip DIN 6335 - K 40 x M8 Ms

